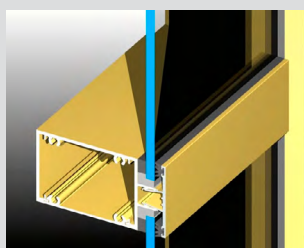
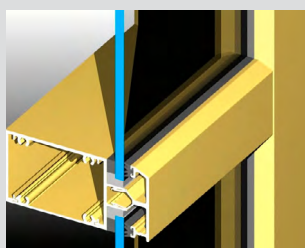


KEY FEATURES

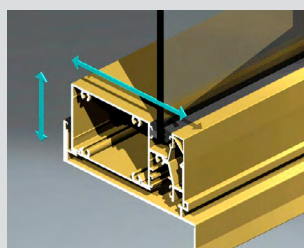
- Series 407 FaceLINE™ framing 102mm x 50mm with the glazing pocket close to the front face.
- We have designed this FrontGLAZE™ framing system with a full depth perimeter frame enabling the frame to be installed into sub-frames without compromising the glazing covers.
- Range of mullion and transom treatments from raised covers through flat covers to structural glazing (no covers).
- Numerous custom designed extrusions to cater for specific applications. A range of sub-sills cover most installations.
- Sub-head and two piece sub-jambs that don't compromise the glazing system.
- Numerous door thresholds including weather resisting thresholds for external and internal swing doors.
- Compatible with Series 50, 51 and 52 doors.
- Designed for 1 or 2-story shopfronts.
- High water resistance using interlocking mullions.



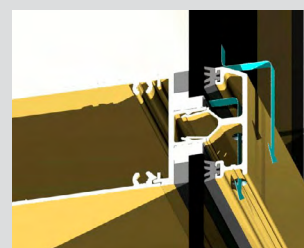
Series 407 will accept flat or raised snap-on cover bead.



Interlocking mullion can be reinforced. Raised or flat cover bead options available.



Series 407 has been designed to go into sub-head, sub-sill and sub-jambs. Sub-sill shown above.



Concealed drainage designed to shed water more efficiently.

GENERAL

Max Panel Height
Various

Max Panel Width
Various

Max Glass Thickness
10.38mm

Frame Depth
102mm

ENERGY

UW Range
4.2-6.1

SHGC Range
0.38-0.63

WEATHER

Maximum Water
600 Pa.

ACOUSTICS

This product has not been acoustics tested.